

Metaloterm® Fire Stop

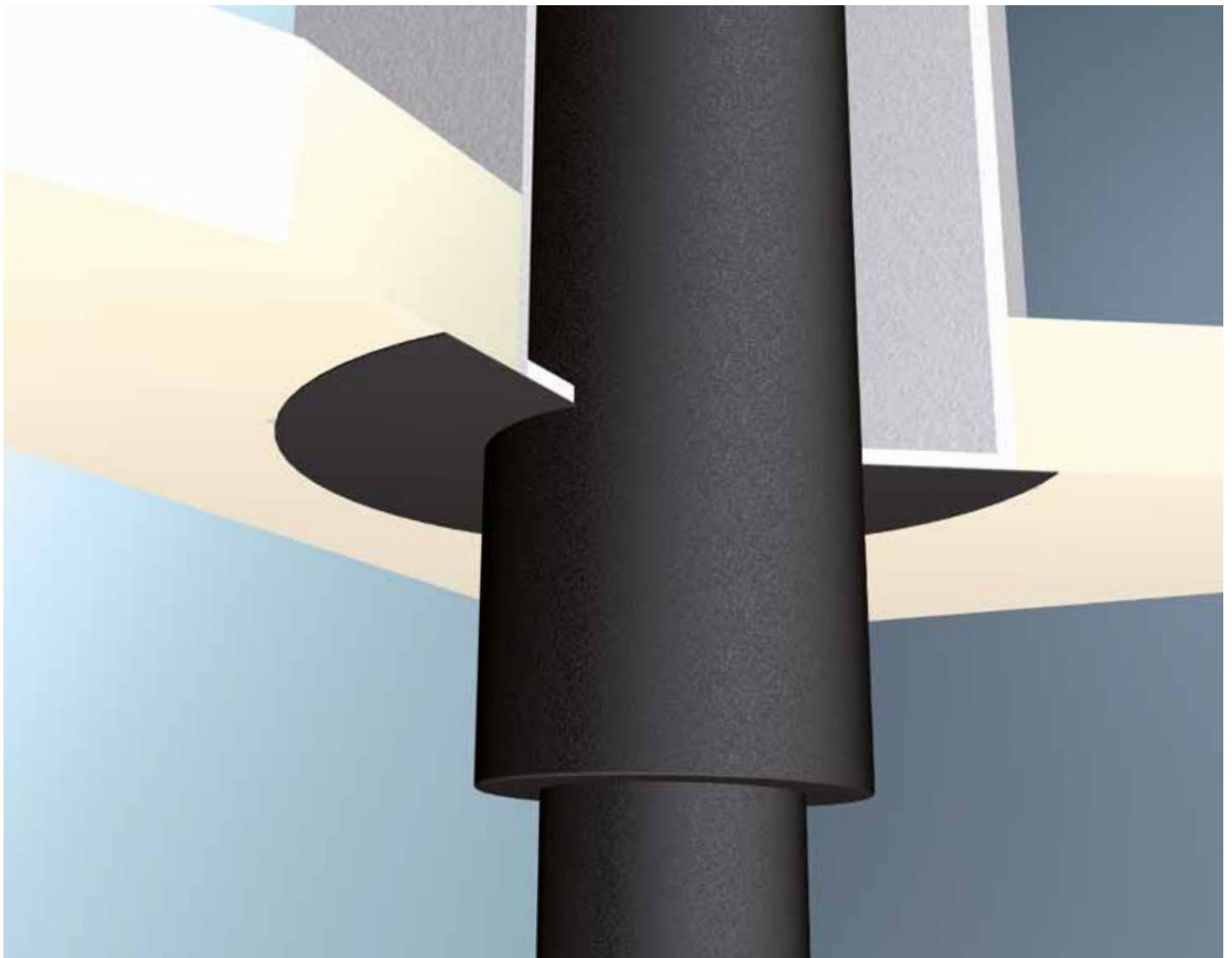
Penetration of combustible floors

Metaloterm® provides a fire stop arrangement which is easy to install and fire safe.

The fire stop arrangement is built up out of different components:

- A solid fire stop which is available in three options: one piece round, two pieces round and one piece square
- A smooth connector between the twin wall chimney system and the connection flue pipe
- Optionals if needed (like support for load bearing)

The unique combination of these Metaloterm® products is applicable for any kind of floor penetration.

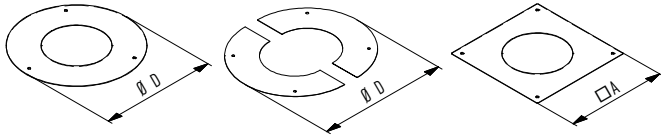


This construction meets the requirements of the BS EN 1856-1:2009. CE: AT: T600-N1-D-V3-L50040-G50

CE: MF: T450-N1-D-V3-L50040-G50

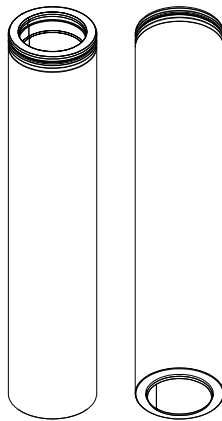
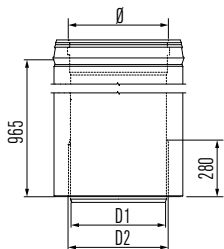
Fire stop arrangement:

Rosette					Rosette 2 parts					Square finish, low block				
MFIBR					MFIBR2					MFIBAPL				
Ø	130	150	180	200	Ø	130	150	180	200	Ø	130	150	180	200
D	380	400	430	450	D	380	400	430	450	A	315	315	365	365
ATIBR					ATIBR2					ATIBAPL				
Ø	130	150	180	200	Ø	130	150	180	200	Ø	130	150	180	200
D	405	425	455	475	D	405	425	455	475	A	315	315	365	365



Adaptor long (to EN)

MFAL					
Ø	130	150	180	200	250
D1	127	147	177	197	247
D2	134	154	184	204	254
ATAL					
Ø	130	150	180	200	250
D1	127	147	177	197	247
D2	134	154	184	204	254

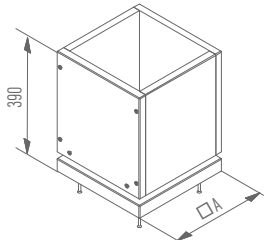


When installing a chamber within 50mm clearance, a non-combustible material must be used. Outside 50mm any material is allowed. Combustible when to prevent accidental human contact and to avoid combustible material being placed too close to the chimney. Only non-combustible when to create full fire protection, combined with an approved fire stop in each lead-through.

Optionals:

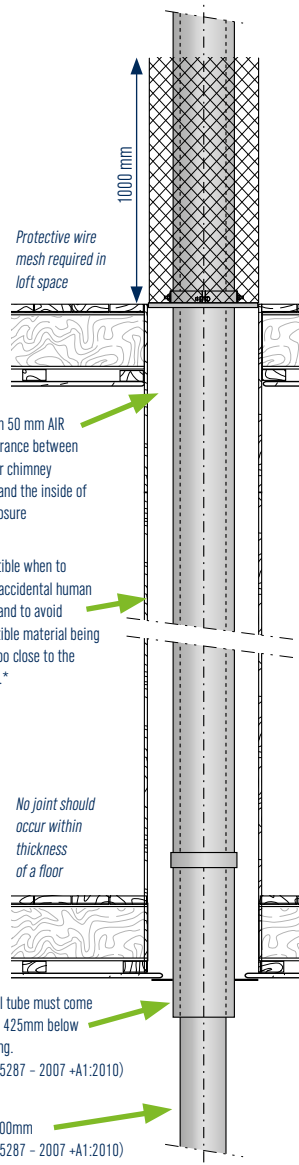
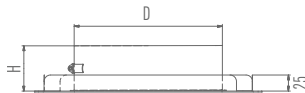
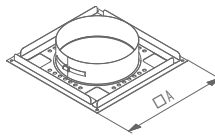
Standard block low

MFIBBL				
Ø	130	150	180	200
A	325	325	325	375
ATIBBL				
Ø	130	150	180	200
A	325	325	375	375



Floor support

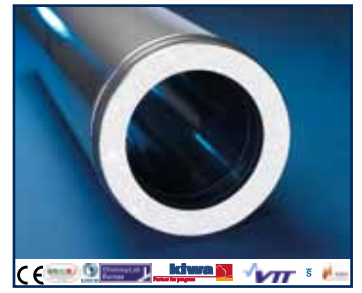
MFIBVQ				
Ø	130	150	180	200
A	355	355	405	405
D	210	230	260	280
H	70	70	70	70
ATIBVQ				
Ø	130	150	180	200
A	355	355	405	405
D	210	230	260	280
H	70	70	70	70



* Where the enclosure is required to form a part of the fire separation of the dwelling it should be in an appropriately rated fire resistant board

Where the chimney system penetrates more than one floor please contact us for more information.

Metaloterm® AT



The only system with a 30 year guarantee, even after chimney fire!

ONTOP METALOTERM AT

Twin walled stainless steel system chimney products with mineral fibre Amgiso® insulation. CE marked and designated as suitable for use with wood, oil, coal.

Metaloterm® MF



The Metaloterm® MF system is a modular twin wall insulated flue/chimney system, made of stainless steel, with a high temperature sealing ring. Metaloterm® MF is a universal flue/chimney system which is suitable for both high and low temperatures, non-condensing and condensing applications with flue gasses in positive and negative pressure. It can resist a chimney fire. Therefore the system is suited for a wide range of applications such as boilers, stoves and ovens. The product range also contains a wide variety of silencers. For Passive house the Metaloterm® assortment provides the Iso-block which can be combined with MF. The system can also be used for CHP applications, in this case a special VITON® sealing ring might be necessary. Due to the proven quality Metaloterm® MF has a 10 year guarantee.

Ontop B.V.

Postbus 135, 4330 AC Middelburg
Oude Veerseweg 23, 4332 SH Middelburg
Nederland
T: +31 (0)118 68 99 00
F: +31 (0)118 68 99 99
E: info.nl@ontop.nl

Ontop Abgastechnik GmbH

Albert-Einstein-Straße 8
51674 Wiehl
Deutschland
T: +49 (0)2261 708 -0
F: +49 (0)2261 708 90
E: info.de@ontop-abgastechnik.de

Metaloterm France S.A.R.L.

65, Avenue du Général de Gaulle
77420 Champs-sur-Marne
France
T: +33 (0)1 64 62 12 30
F: +33 (0)1 64 62 11 08
E: info.fr@metaloterm.com

Ontop Polska Sp. z o.o.

ul. Hallera 75
98 - 100 Wiewiórczyn
Polska
T: +48 (0)43 676 33 66
F: +48 (0)42 209 10 57
E: info.pl@metaloterm.com

